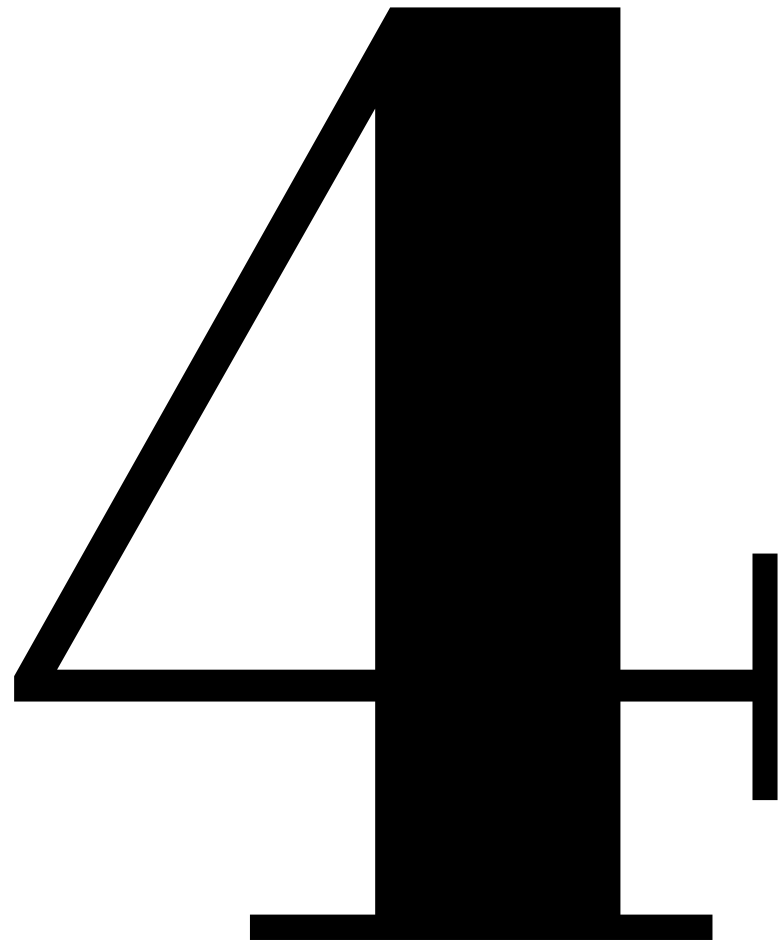


nobonobo®

Textile collection

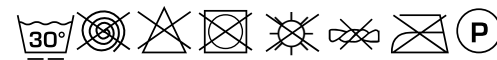


BELLAGIO / FAVOLA / FLOSSY / KABO / KIKI / MASALA / MIRTA / RITA

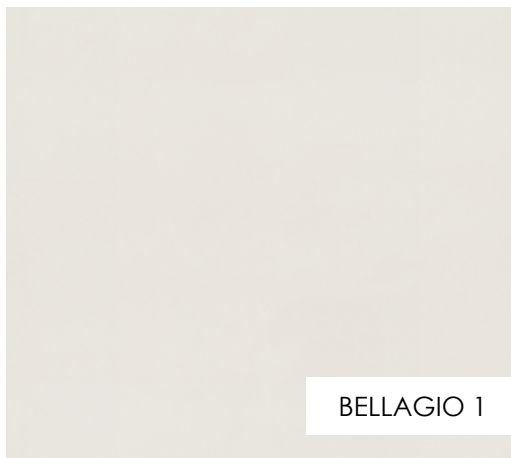
BELLAGIO

Martindale test: >100.000 cycles
Pilling: test (scale 1/5) 5

Fiber composition: 100% PL
Weight: 551 g/m² ± 5%



BELLAGIO 1



BELLAGIO 1



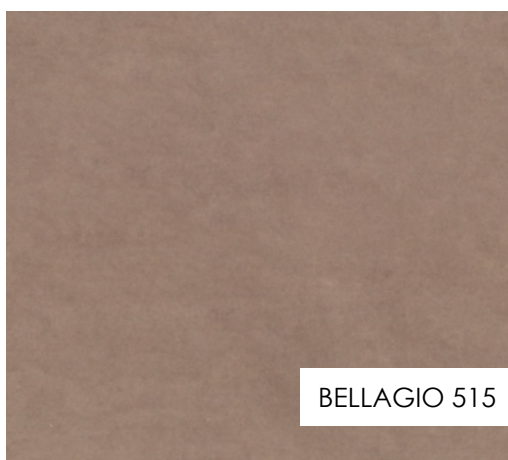
BELLAGIO 50



BELLAGIO 156



BELLAGIO 245



BELLAGIO 515



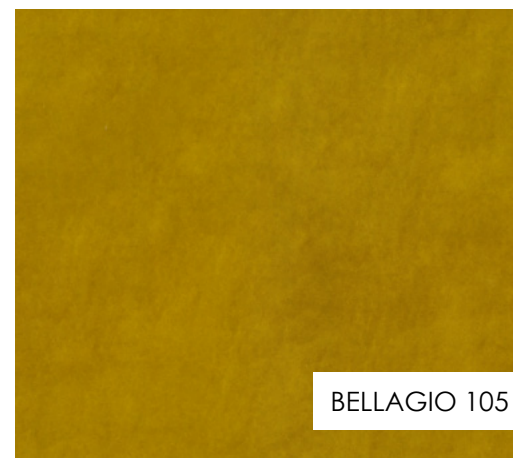
BELLAGIO 80



BELLAGIO 248



BELLAGIO 131



BELLAGIO 105



BELLAGIO 514



BELLAGIO 28



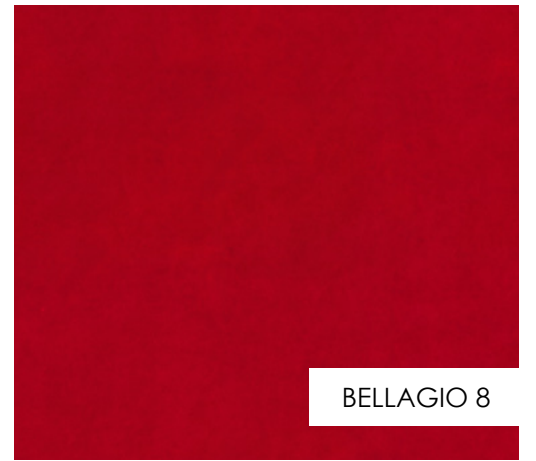
BELLAGIO 62



BELLAGIO 65



BELLAGIO 81



BELLAGIO 8



BELLAGIO 242



BELLAGIO 300



BELLAGIO 13



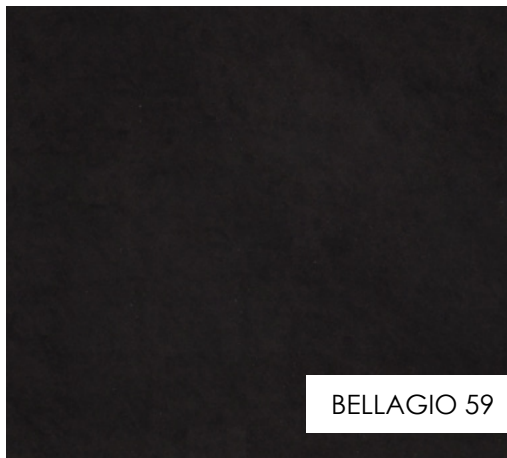
BELLAGIO 213



BELLAGIO 271



BELLAGIO 14



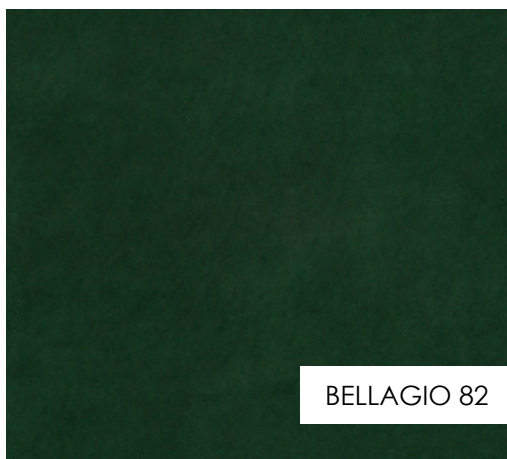
BELLAGIO 59



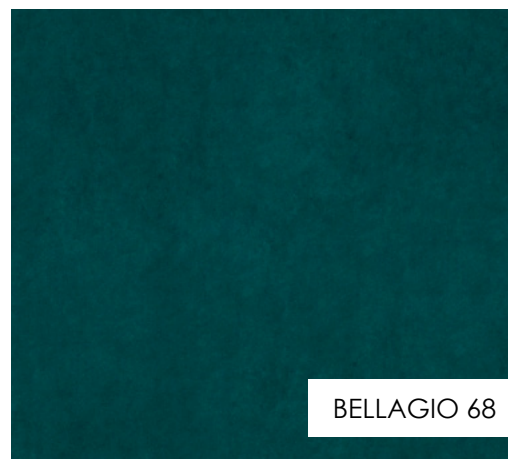
BELLAGIO 11



BELLAGIO 355



BELLAGIO 82



BELLAGIO 68



BELLAGIO 321



BELLAGIO 503



BELLAGIO 324

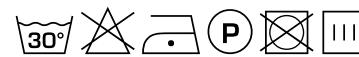


BELLAGIO 451

FAVOLA

Martindale test: >100 000 cycles
Color fastness to light: (scale 1/8): 5/6
Color fastness to rubbing:
(scale 1/5) dry 4/5, wet 4/5
Pilling: test (scale 1/5) 5

Fiber composition: 100% PL
Weight: 575 g/m² ± 5%



FAVOLA 1



FAVOLA 1



FAVOLA 2



FAVOLA 3



FAVOLA 4



FAVOLA 5



FAVOLA 6



FAVOLA 7



FAVOLA 8



FAVOLA 9



FAVOLA 10



FAVOLA 11



FAVOLA 12



FAVOLA 13



FAVOLA 14



FAVOLA 15



FAVOLA 16



FAVOLA 17



FAVOLA 18



FAVOLA 19



FAVOLA 20



FAVOLA 21



FAVOLA 22



FAVOLA 23



FAVOLA 24



FAVOLA 25



FAVOLA 26



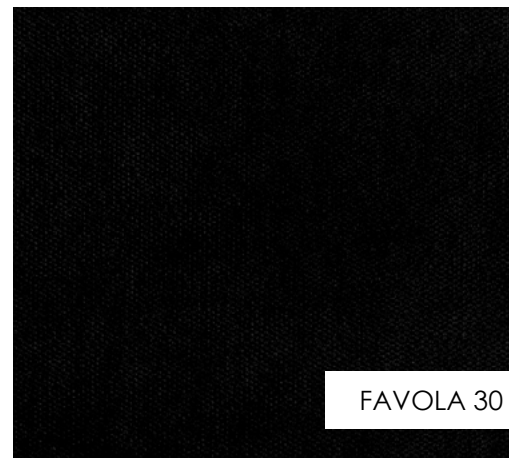
FAVOLA 27



FAVOLA 28



FAVOLA 29



FAVOLA 30

FLOSSY

Color fastness to rubbing:

dry 4/5, wet 4/5

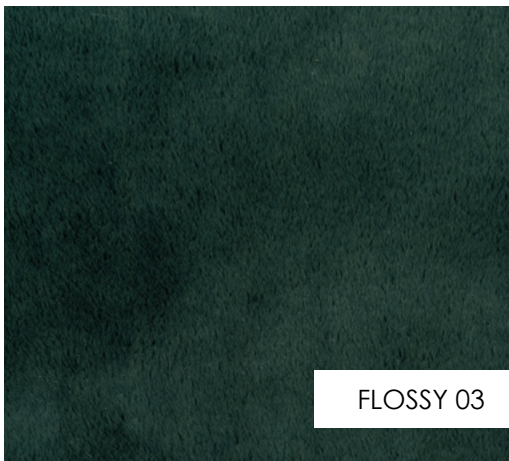
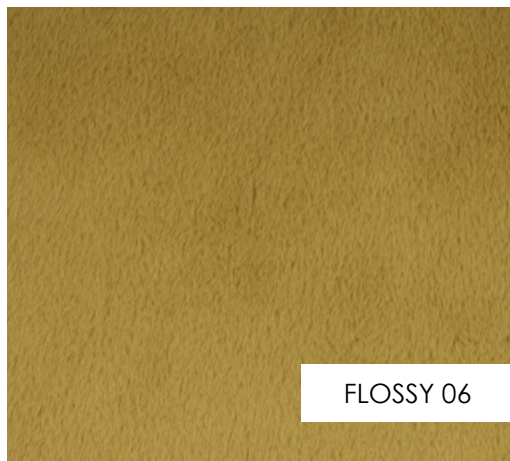
Color fastness to light: 4/5

Fiber composition: 100% PL

Weight: 950 g/m² ± 8%



FLOSSY 01



KABO

Martindale test: $\geq 20\ 000$ cycles

Color fastness to light: $\geq 4/5$

Color fastness to rubbing:

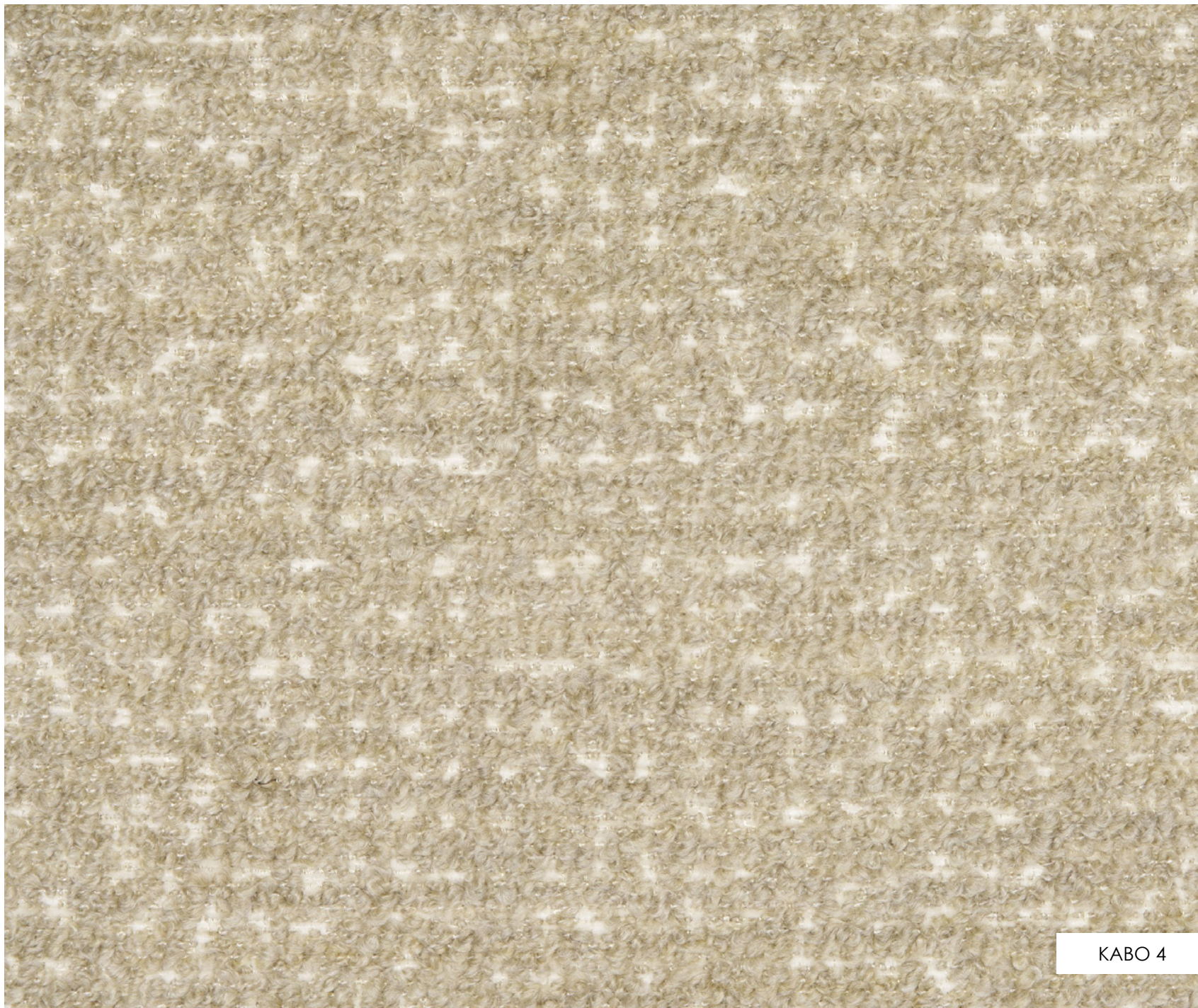
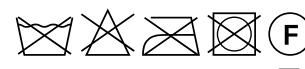
dry $\geq 4/5$, wet ≥ 4

Pilling: test (skala 1/5) $\geq 3/4$

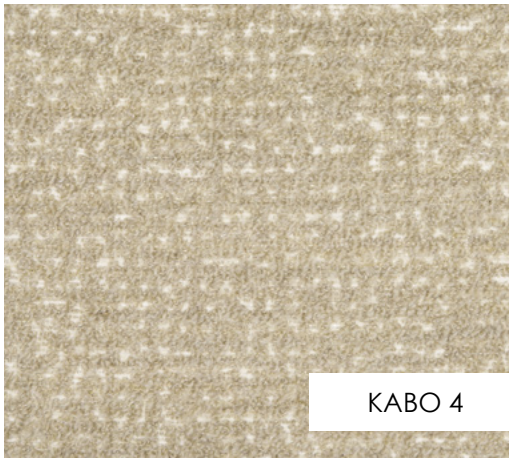
Fiber composition:

57% PC, 23% PL, 20% CO

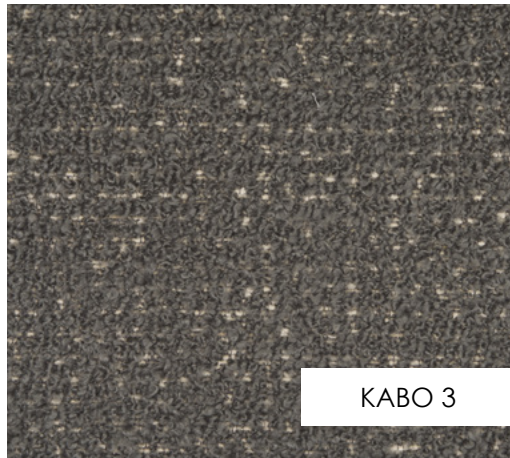
Weight: $770\ \text{g/m}^2 \pm 8\%$



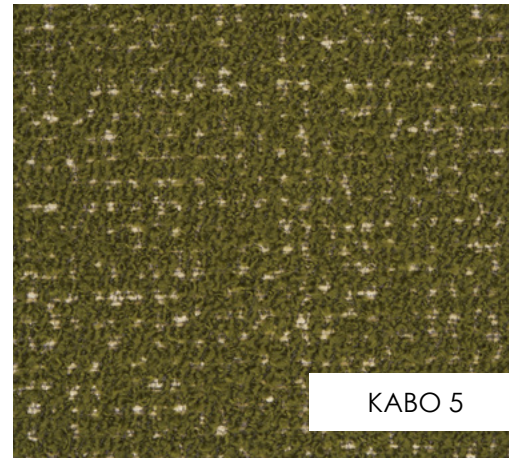
KABO 4



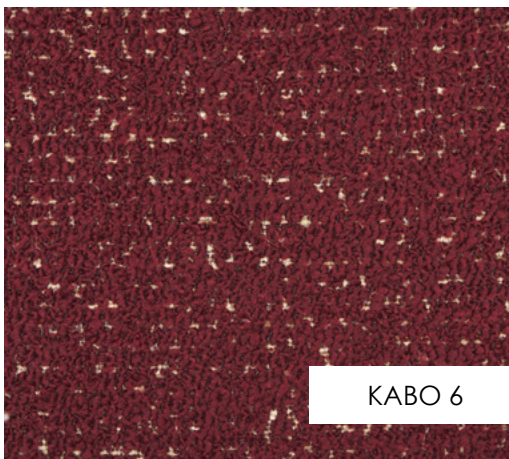
KABO 4



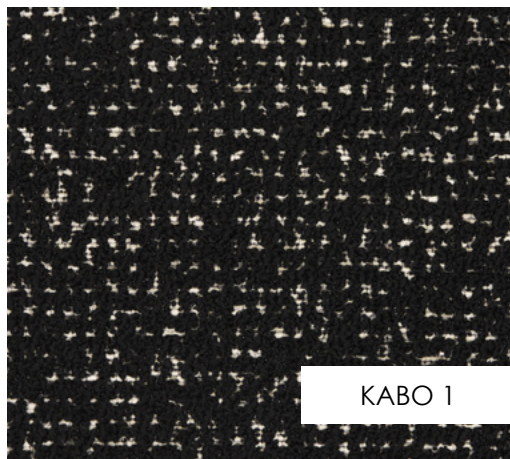
KABO 3



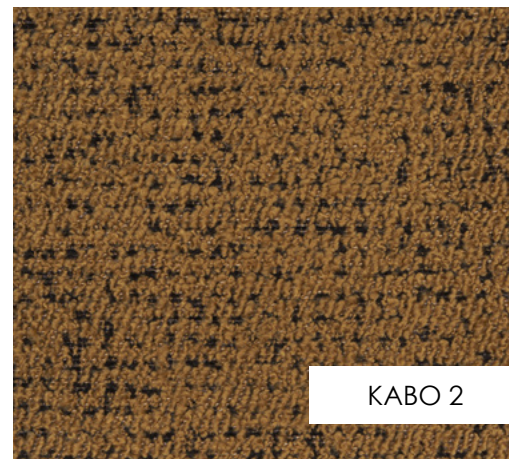
KABO 5



KABO 6



KABO 1



KABO 2

KIKI

Martindale test: $\geq 20\ 000$ cycles

Color fastness to light: $\geq 4/5$

Color fastness to rubbing:

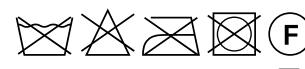
dry $\geq 4/5$, wet ≥ 4

Pilling: test (skala 1/5) $\geq 3/4$

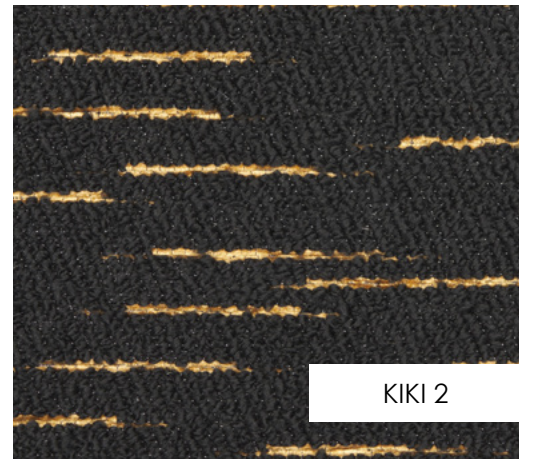
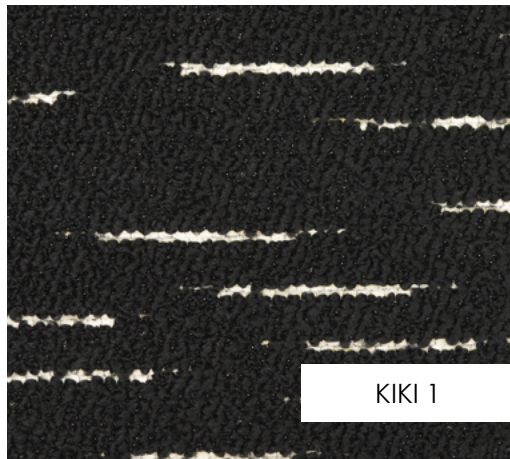
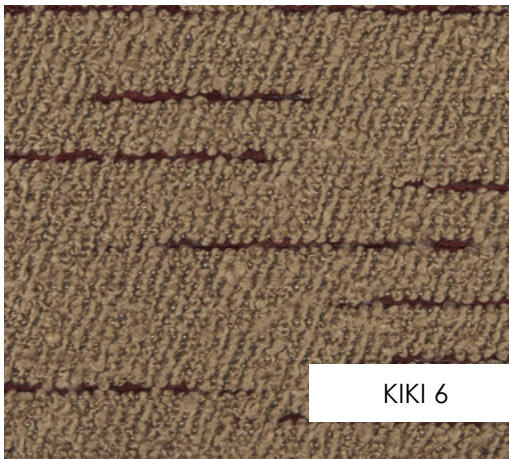
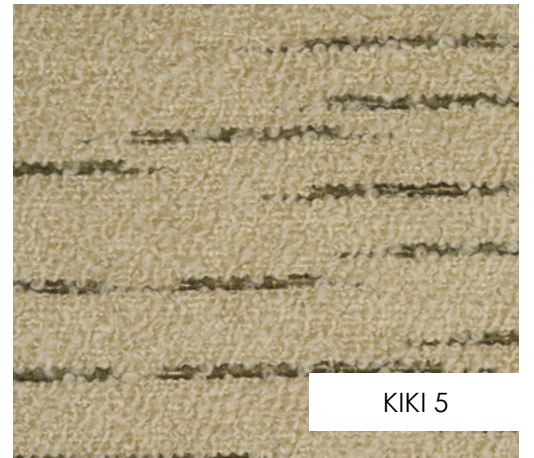
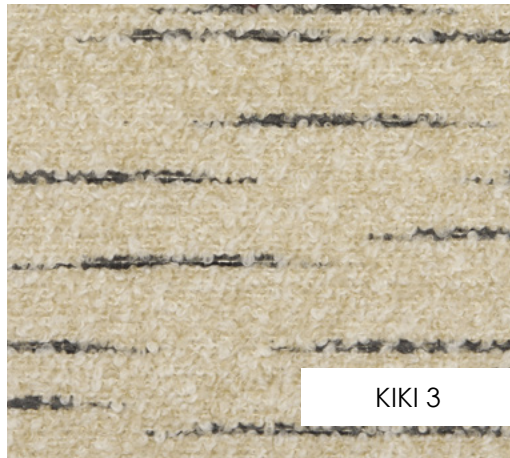
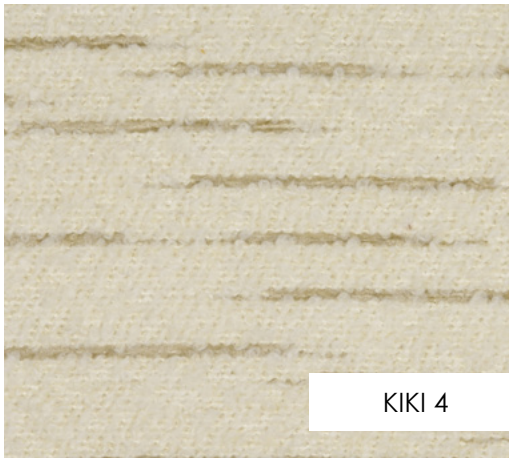
Fiber composition:

69% PC, 20% PL, 11% CO

Weight: $860\text{ g/m}^2 \pm 8\%$



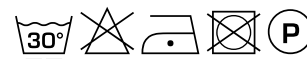
KIKI 4



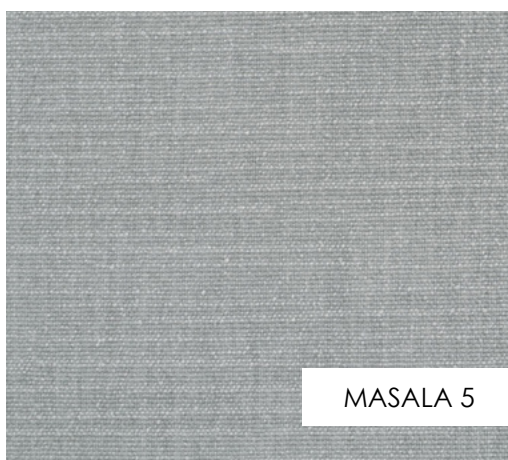
MASALA

Martindale test: 100 000 cycles
Color fastness to light: (scale 1/8): 4/5
Color fastness to rubbing:
dry 4/5, wet 4
Pilling: test (scale 1/5) 4/5

Fiber composition: 95% PL, 5% CO
Weight: 910 g/m² ± 5%



MASALA 1





MASALA 14



MASALA 15



MASALA 16



MASALA 17



MASALA 18



MASALA 19



MASALA 20



MASALA 22



MASALA 23



MASALA 9



MASALA 6



MASALA 7



MASALA 8



MASALA 21



MASALA 31



MASALA 24



MASALA 25



MASALA 26



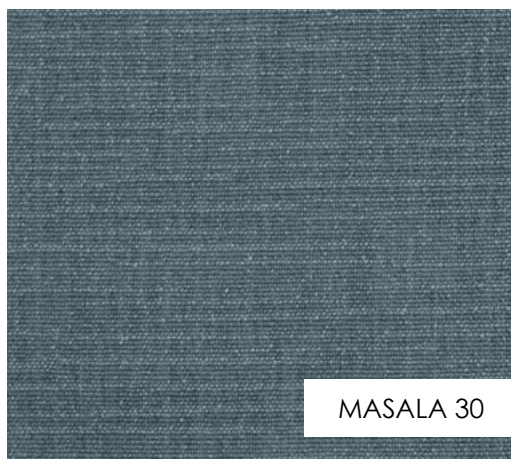
MASALA 27



MASALA 28



MASALA 29



MASALA 30

MIRTA

Martindale test: $\geq 25\ 000$ cycles

Color fastness to light: $\geq 4/5$

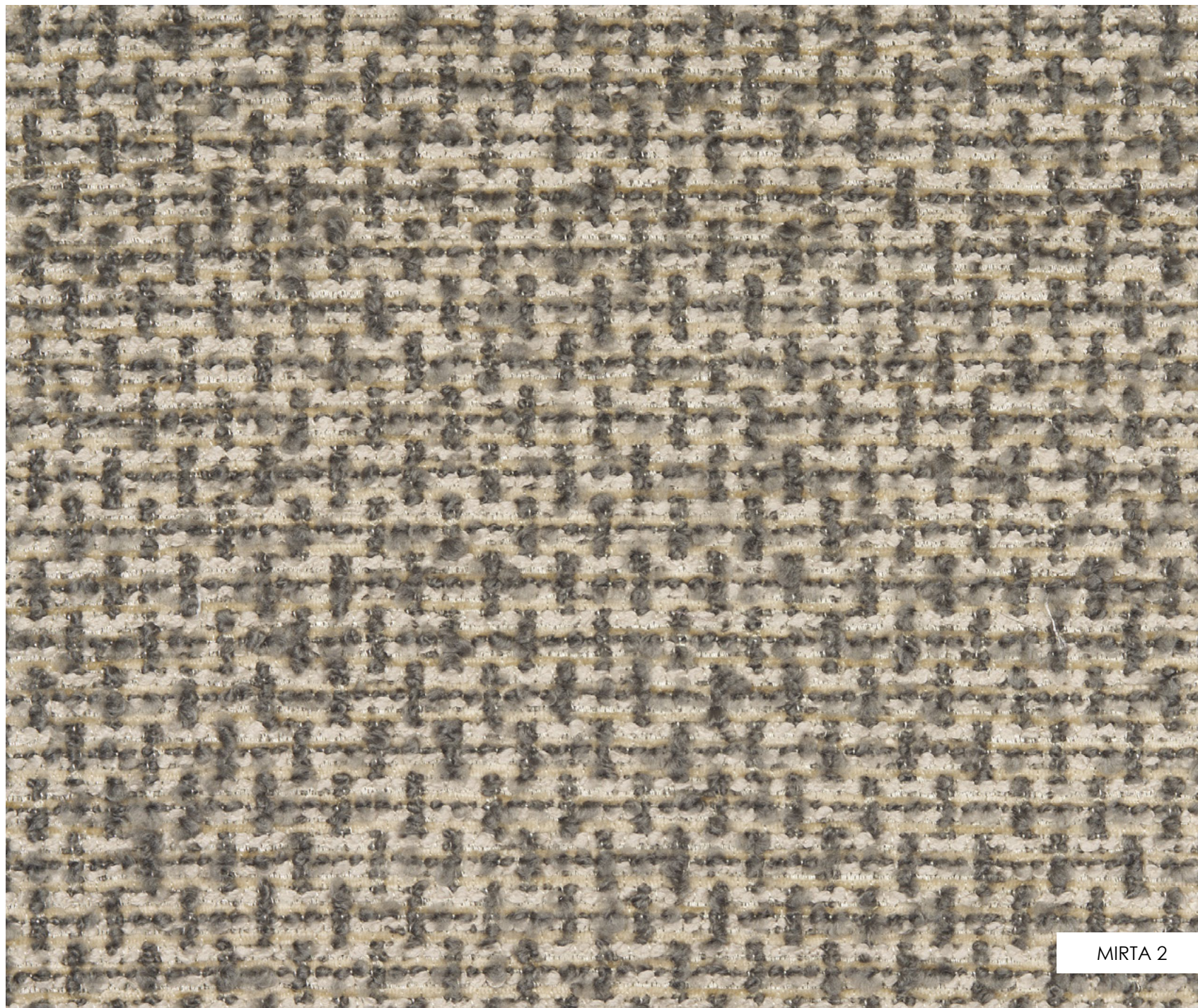
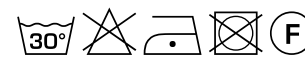
Color fastness to rubbing:

dry ≥ 4 , wet $\geq 3/4$

Pilling: test (skala 1/5) $\geq 3/4$

Fiber composition: 52% PL, 48% PC

Weight: $740\ \text{g/m}^2 \pm 8\%$



MIRTA 2



MIRTA 2



MIRTA 6



MIRTA 4



MIRTA 1



MIRTA 5

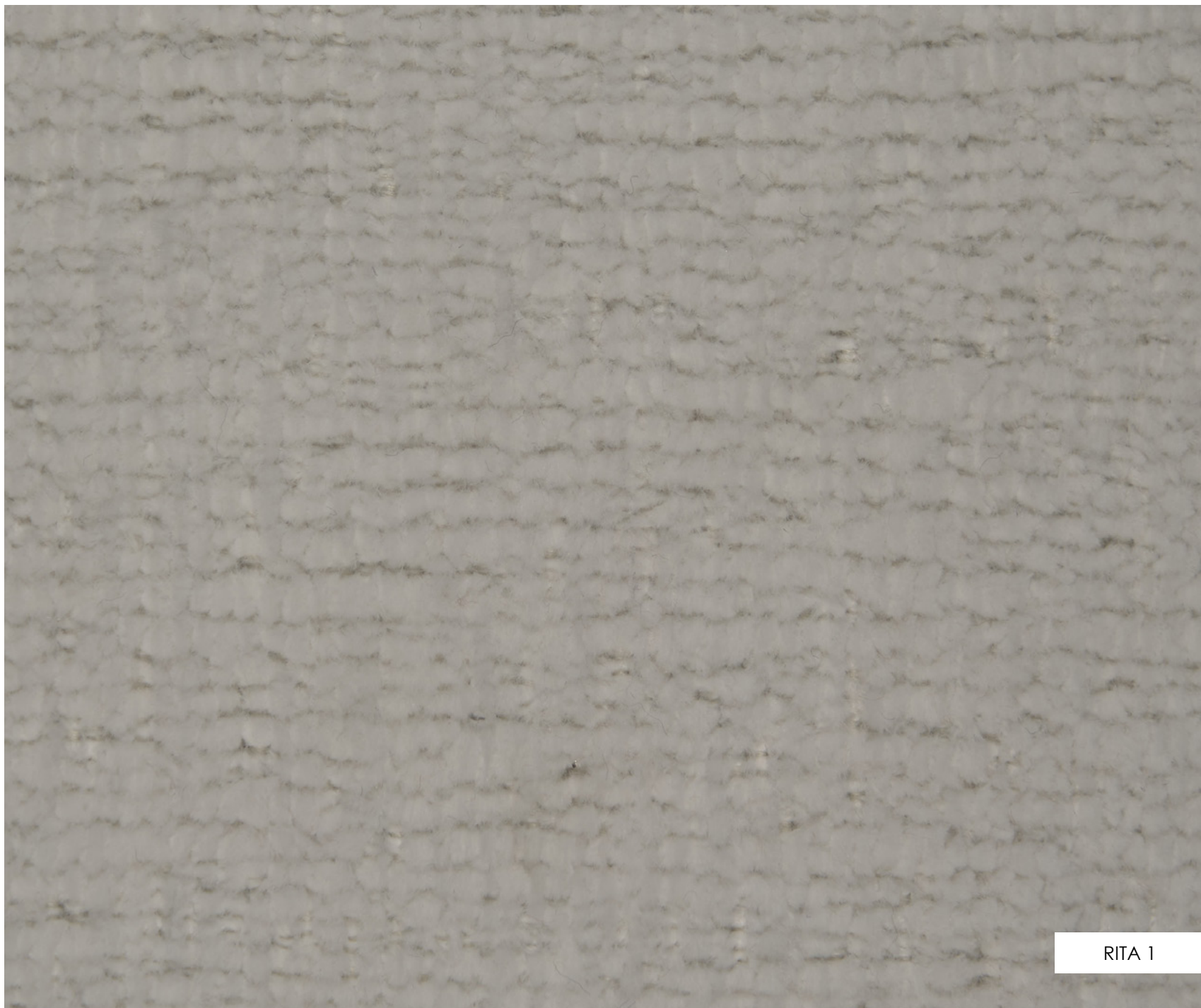
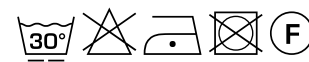


MIRTA 3

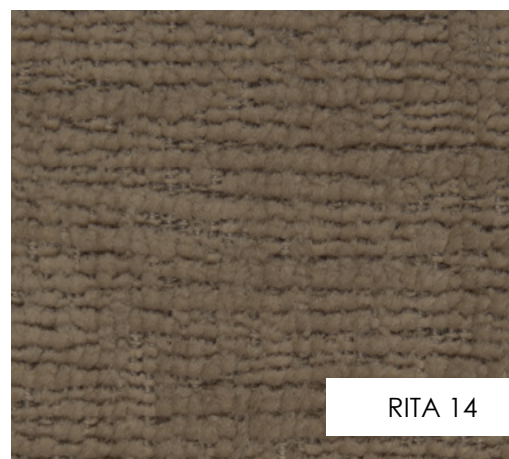
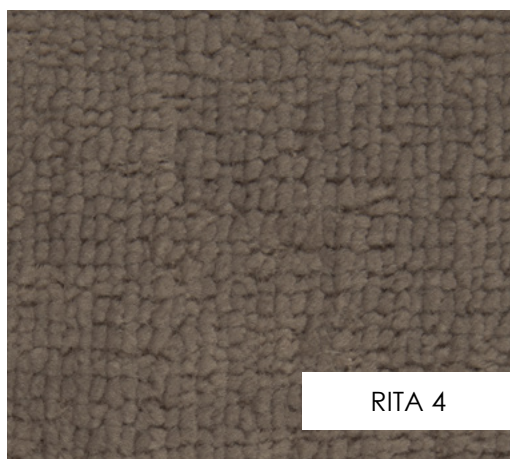
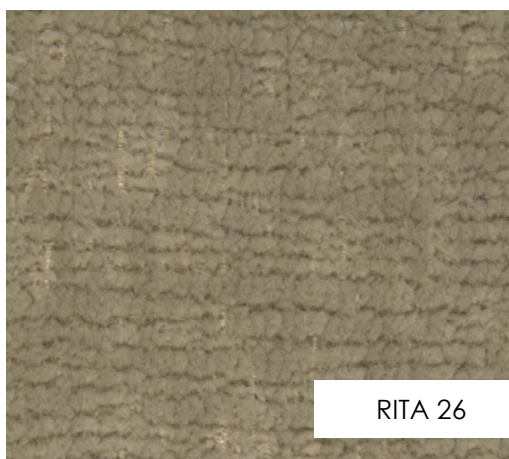
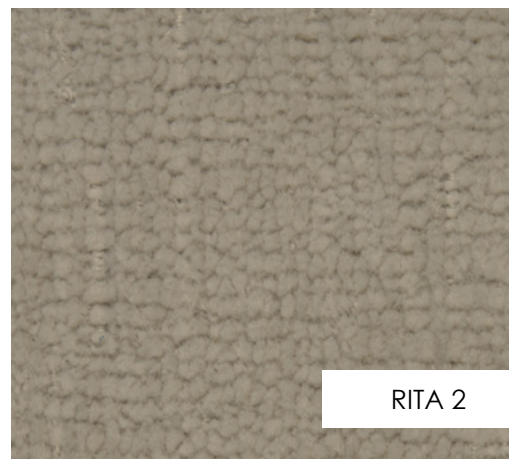
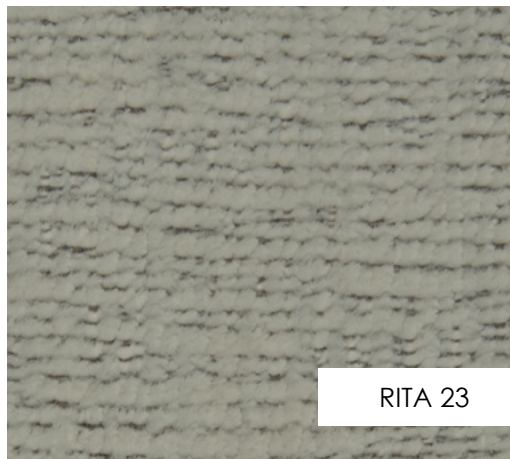
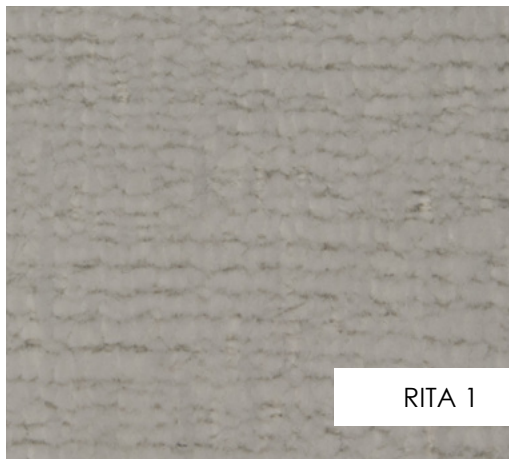
RITA

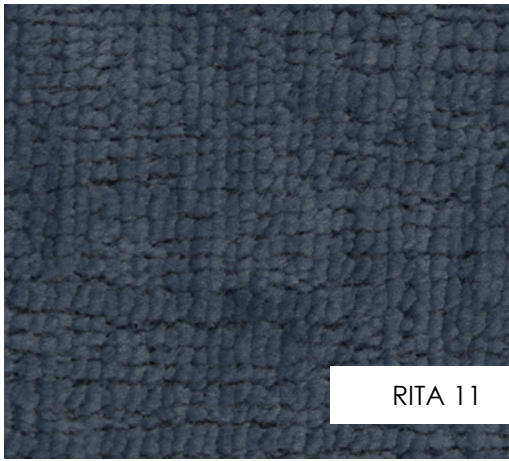
Test Martindale: 50 000 cycles
Color fastness to light: 4/5
Color fastness to rubbing: dry 4, wet 3
Pilling: test (skala 1/5) ≥ 4

Fiber composition: 72% RPET, 28% PL
Weight: 740 g/m² \pm 5%



RITA 1

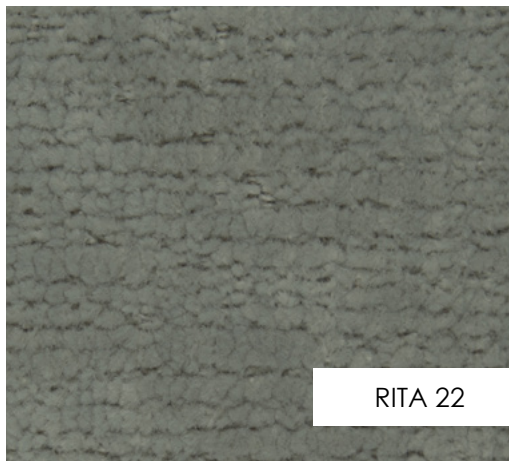




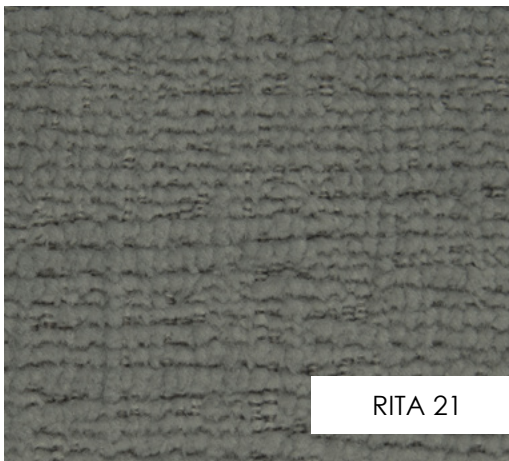
RITA 11



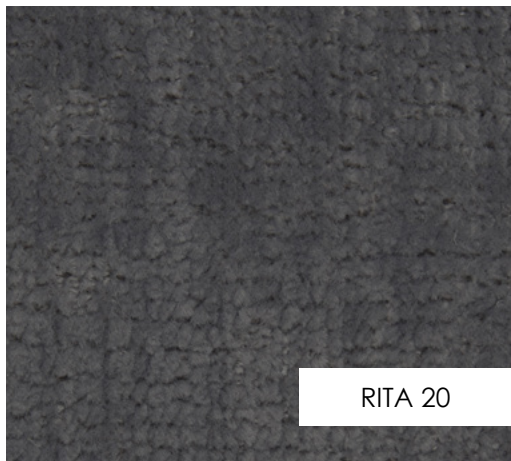
RITA 32



RITA 22



RITA 21



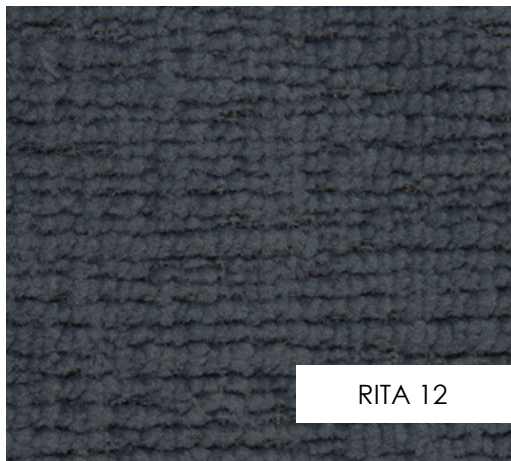
RITA 20



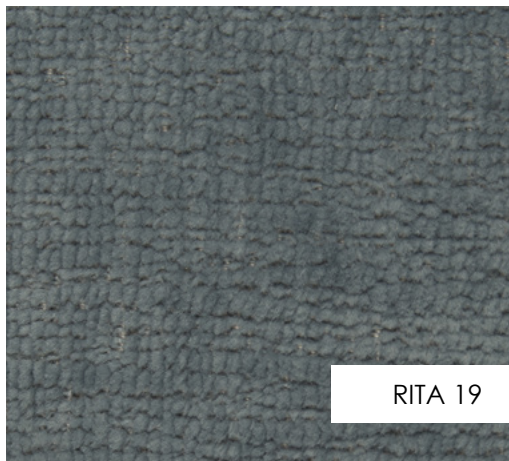
RITA 5



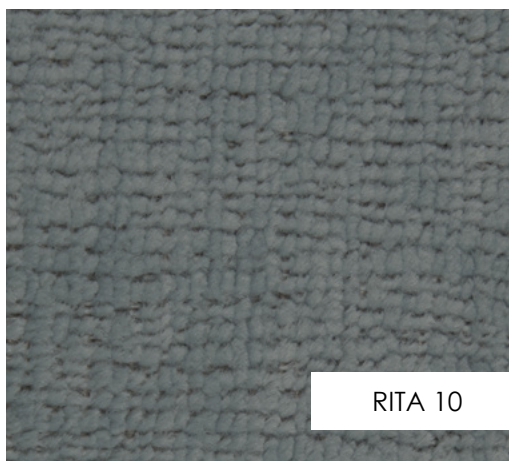
RITA 18



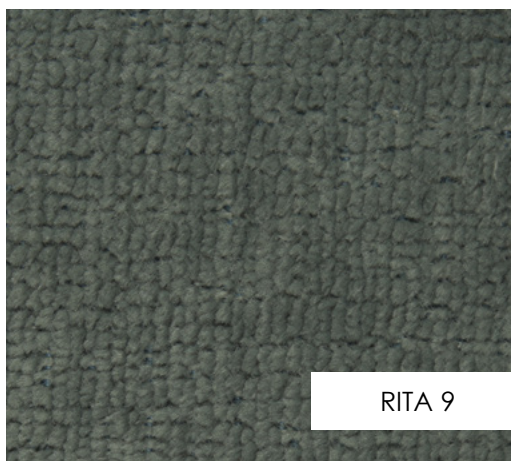
RITA 12



RITA 19



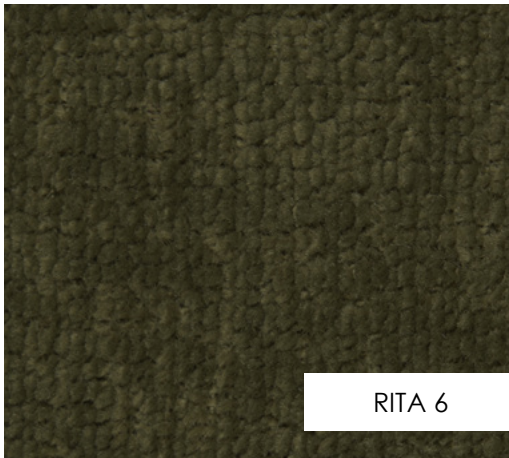
RITA 10



RITA 9



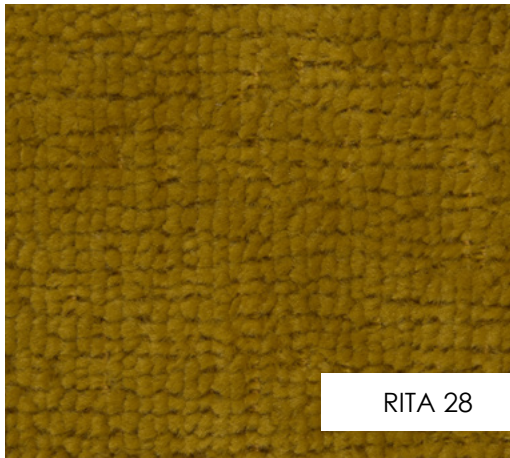
RITA 7



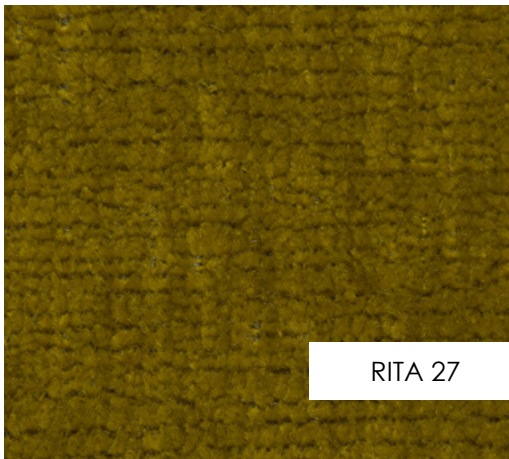
RITA 6



RITA 8



RITA 28



RITA 27

nobonobo.pl