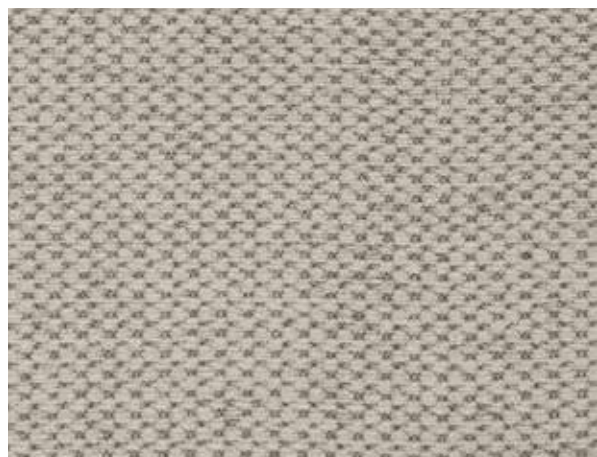


nobonobo[®]

Natural fabrics collection

NOBONOBO | **PIEVA** | natural fabric



Fiber composition: 14% LI 67% VI 16% CO 3% PL

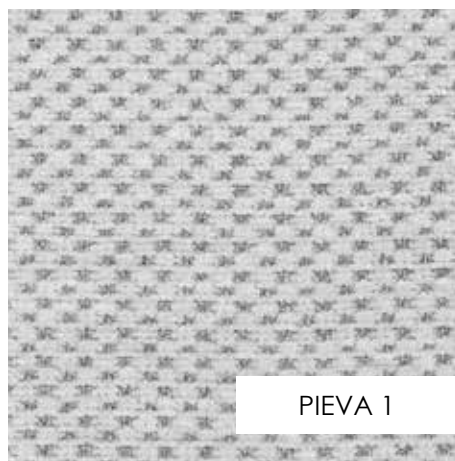
Weight: 780g/M2 +/-5%

Martindale test: >20 000 cykli

Color fastness to light: 4/5 - 5

Color fastness to rubbing: dry 4-5, wet 4-5

Pilling: test (scale 1/5) 4/5



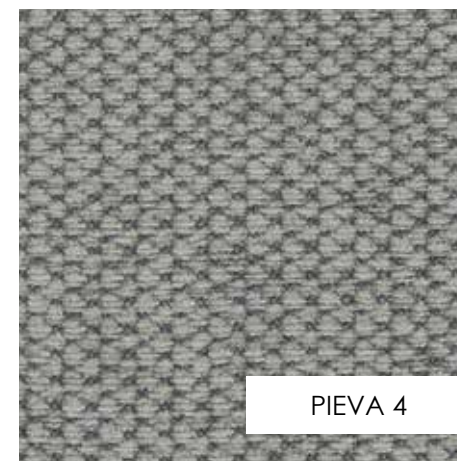
PIEVA 1



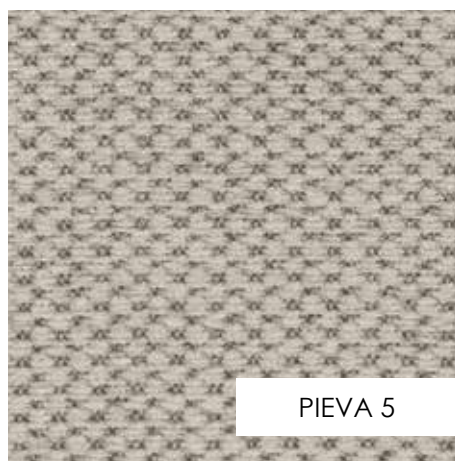
PIEVA 2



PIEVA 3

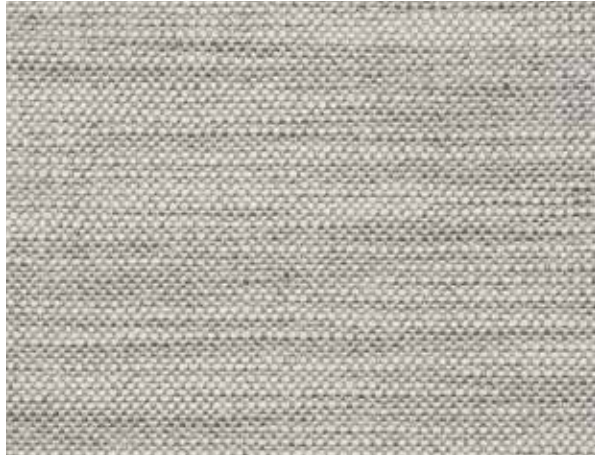


PIEVA 4



PIEVA 5

NOBONOBO | SINA | natural fabric



Fiber composition: 31% CO 53% VI 11% LI 5% PA

Weight: 1070g/M2 +/-5%

Martindale test: >45 000 cykli

Color fastness to light: 4/5 - 5

Color fastness to rubbing: dry 4-5, wet 3/4

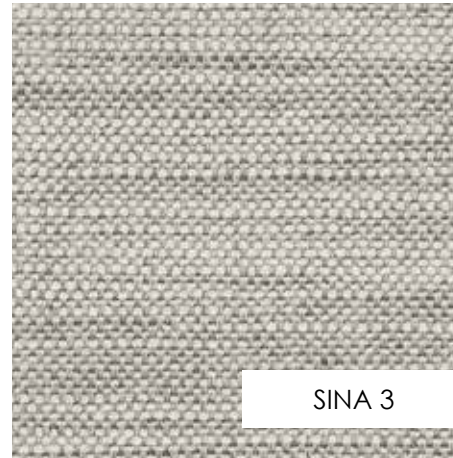
Pilling: test (scale 1/5) 4/5



SINA 1



SINA 2



SINA 3



SINA 4



SINA 5

NOBONOBO | **FRIGO** | natural fabric



Fiber composition: 22% LI 72% VI 6% CO
Weight: 725g/M2 +/-5%
Martindale test: >30 000 cykli
Color fastness to light: 4/5 - 5
Color fastness to rubbing: dry 4-5, wet 3/4
Pilling: test (scale 1/5) 4/5



FRIGO 1



FRIGO 2



FRIGO 3



FRIGO 4



FRIGO 5



FRIGO 6

NOBONOBO | **SPESSA** | natural fabric



Fiber composition: 15% LI 53% VI 23% CO 7% PL 2% PC

Weight: 840g/M2 +/-5%

Martindale test: >25 000 cykli

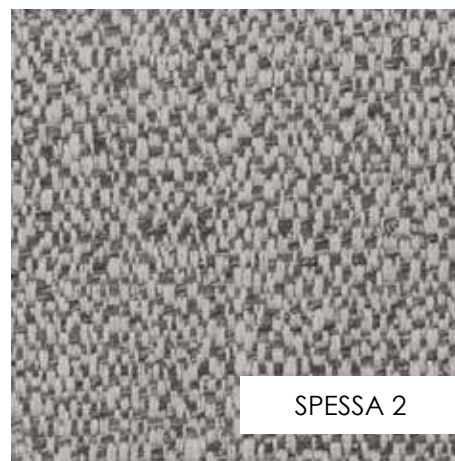
Color fastness to light: 4/5 - 5

Color fastness to rubbing: dry 4/5, wet 3/4

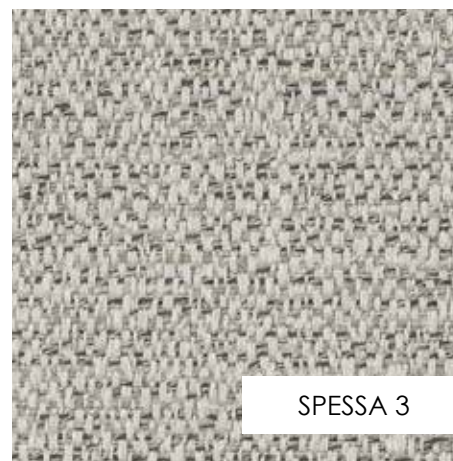
Pilling: test (scale 1/5) 4/5



SPESSA 1



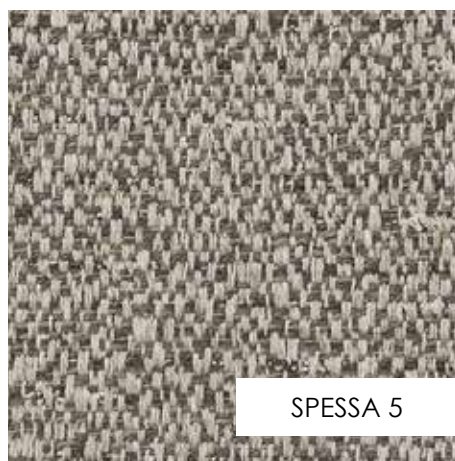
SPESSA 2



SPESSA 3



SPESSA 4



SPESSA 5

NOBONOBO | **PULSANO** | natural fabric



Fiber composition: 39% CO 28% PL 4% LI 8% VI 21% PC

Weight: 800g/M2 +/-5%

Martindale test: >25 000 cykli

Color fastness to light: 4/5 - 5

Color fastness to rubbing: dry 4/5, wet 3/4

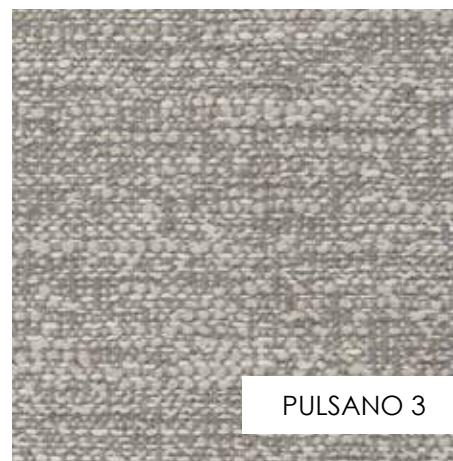
Pilling: test (scale 1/5) 4/5



PULSANO 1



PULSANO 2



PULSANO 3



PULSANO 4



PULSANO 5